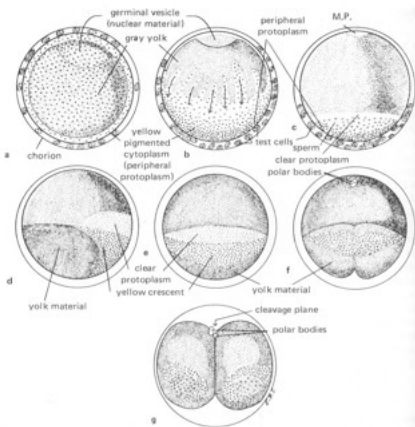
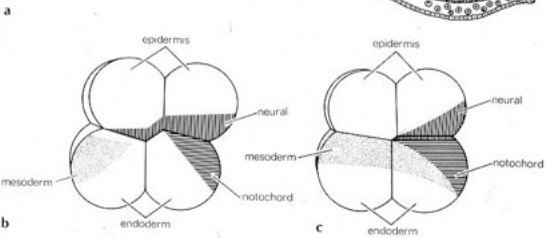
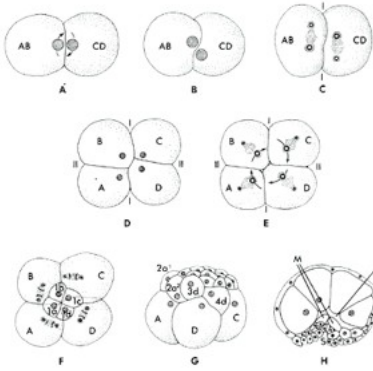
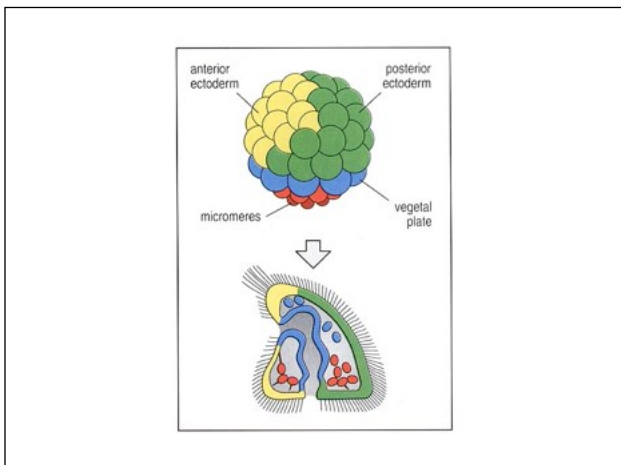
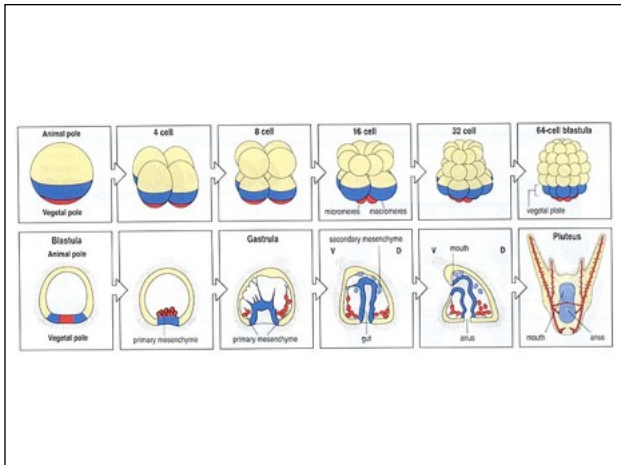
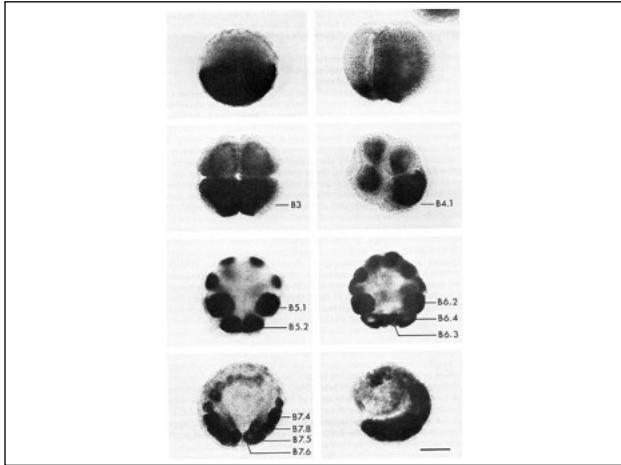
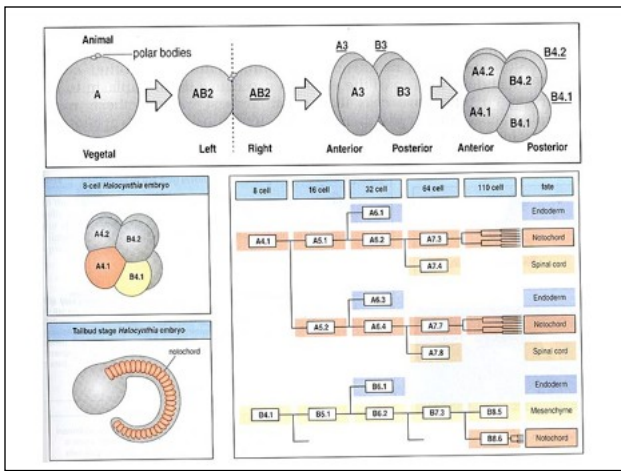


# Developmental Biology

Polarity: Urchins & Worms





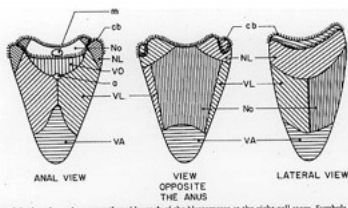


Figure 9. Regions of the larval ectoderm contributed by each of the blastomeres at the eight-cell stage. Symbols are as follows: (m) mouth, (cb) ciliated band, (a) anus.

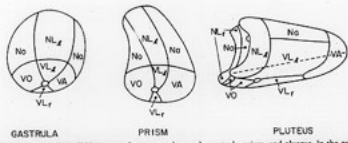


Figure 10. A diagram of the eight-cell blastomeres fused onto the gastrula, prism, and pluteus. In the prism, the elongated body rods transmit pressure to the region of the apical aboral ectoderm, carrying it to the vertex of the pluteus. The neural body and anal anastomosis are represented by a dashed line in the pluteus.

