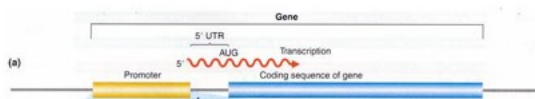
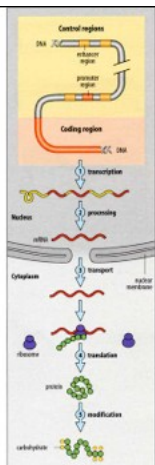


Developmental Biology

Signaling & Gene Regulation

Modern developmental biology is the study of **differential patterns of gene expression** and their effects on cells, tissues, organs, and organisms.

The gene



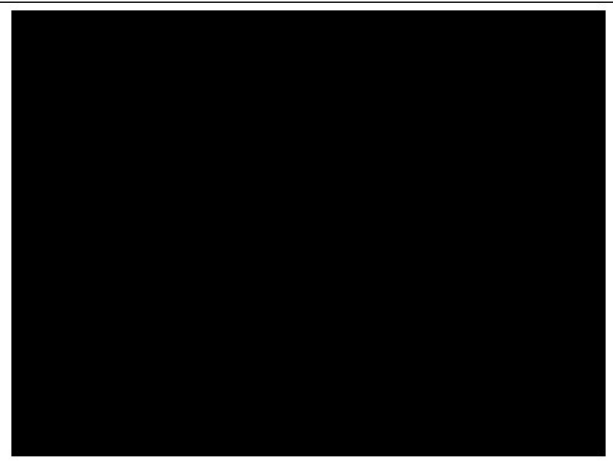
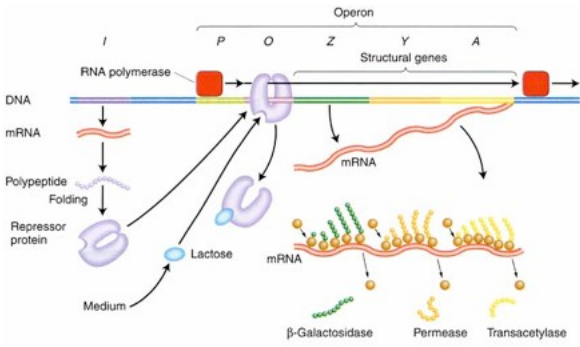
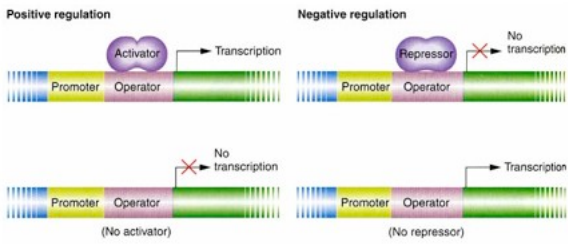
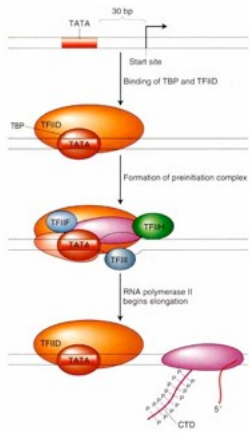
(b) Strong *E. coli* promoters

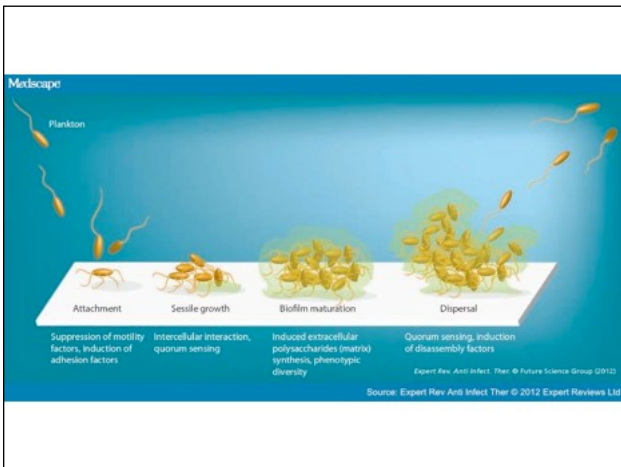
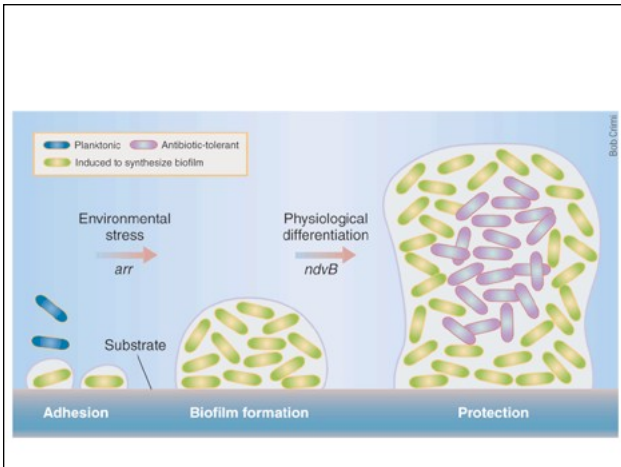
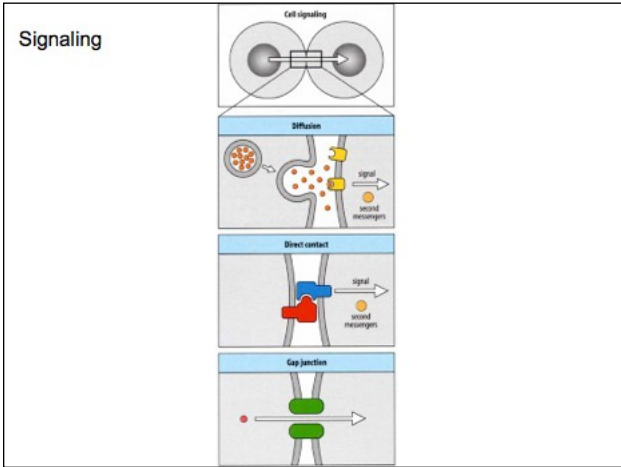
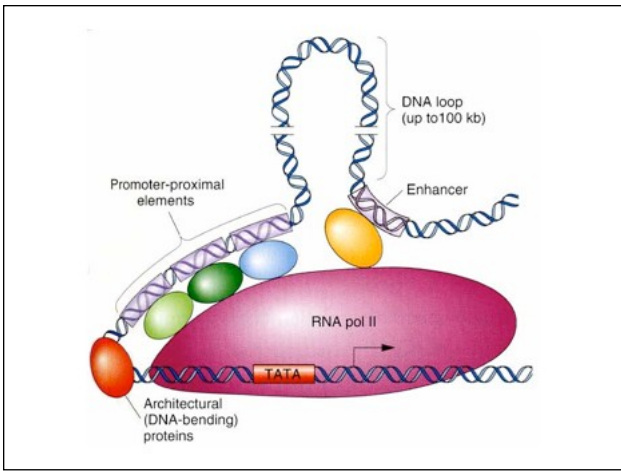
```

tyr mRNA TCTCAACGTAACACTTACAGCGGGG••CGTCATTGATATGATGC•GCCCCCTTCCCGATAAGGG
mm D1 GATCAAAAAAATACTTGTGCAAAAAA••TTGGGATCCCTATAATGGGCTCCBTTGAGACGCAACG
mm X1 ATGCATTTTCCGGCTTGTCTCCTGA••GCCGACTCCCTATAATGGGCTCCBTTGAGACGCGGAT
mm (DXE)2 CCTGAAATTCAGGGTTGACTCTGAAA••GAGGAAAGCGTAAATAC•GCCACCTCCGACAGTGAGC
mm E1 CTGCATTTTTCTATGGGGCTTGGC••GAGAACTCCCTATAATGGGCTCCBTTGAGACGCGGGAT
mm A1 TTTTAAATTTCTCTTGTACGGCCGG••ATAACTCCCTATAATGGGCCACCCTGACACGGAACA
mm A2 GCAAAAAATAAGCTTGACTCTGTAG••CGGGAAGGGTATATGC•ACACCCTGGCCCGCTGAGAA
    
```

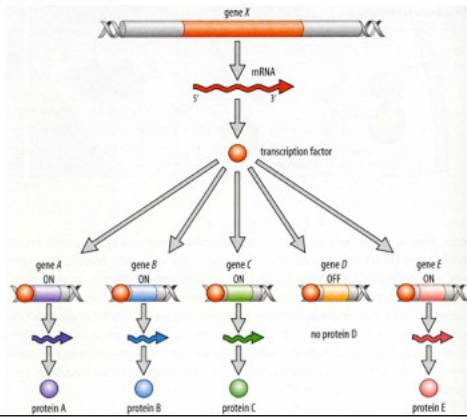
Consensus sequences for most *E. coli* promoters

TTGACAT -35 15-17 bp TATAAT -10

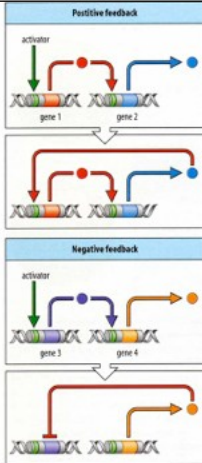




Transcription factors



Feedback



Choanoflagellate (*Monosiga brevicollis*)

